



MedLight

— SERIES —

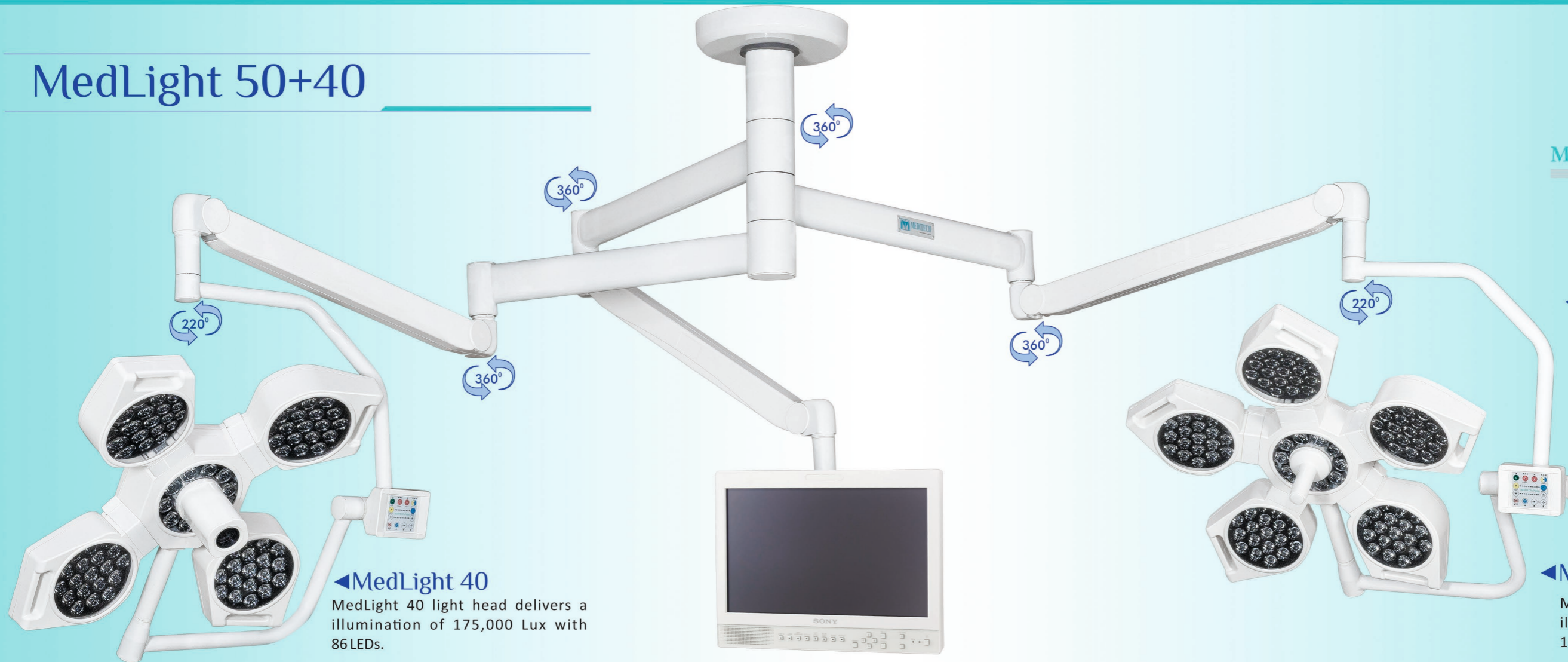
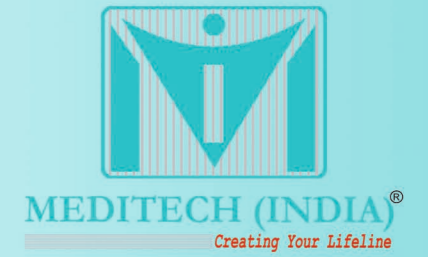
The Next Level of
LED Surgical Lights

An ISO 9001:2015, ISO13485:2016 & CE Certified Co.



MEDITECH (INDIA)[®]
Creating Your Lifeline

MedLight 50+40



Indigenously designed arm structure increase the maneuverability of the light.

MedLight 40

MedLight 40 light head delivers a illumination of 175,000 Lux with 86 LEDs.

MedLight 50

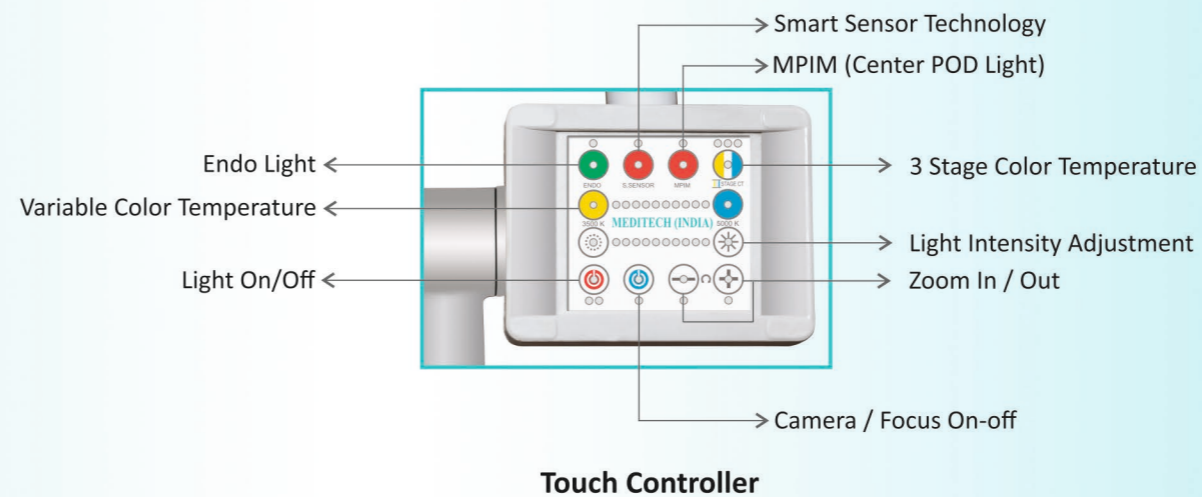
MedLight 50 light head delivers a illumination of 200,000 Lux with 105 LEDs.



Minor Procedure Illumination Light
Once activated, lights at the center pod remain illuminated.



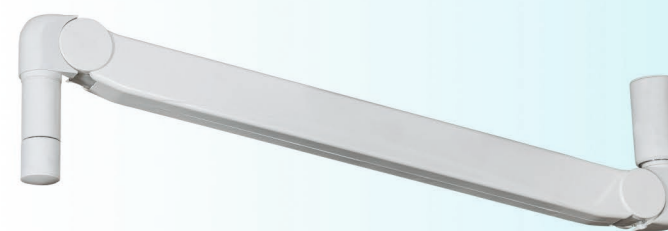
Integrated Video System (Optional)
The MedLight LED lights are available with a fully integrated, high quality Samsung make camera system. The optional camera can be suspended on separate arm.



Endo Light
MedLight series offer an Endo Light setting.

Smart Sensor Technology

A system of sensor in the light decreases the illumination of the LEDs directly above the surgeon head and increase the illumination on the surgical field.



European's Pattern Arms

Intelligent Release Height Control – the light arms can be locked to a specific height in case of RELEASE.



Aerodynamics and Laminar Compatibility

Dome design with low aerodynamic resistance protects the surgical room's laminar air flow during the operation.

Dome is made of high quality fire resistant ABS material.

Variable Color Temperatures

The appropriate light is available for every surgical field, depending on the tissue color, individual perception or surgical application. The Medlight lights have the ability to change to three different color temperature (3700K, 4300K, 4800K).



Offering different configuration to meet the needs of surgeon.



MedLight 50+40+40
(2,00,000 Lux + 1,75,000 Lux + 1,75,000 Lux)



MedLight 50+40
(2,00,000 Lux + 1,75,000 Lux)

We are helping
surgeons do what
they do best



Medlight 40
(1,75,000 Lux)

Sterilizable and Detachable Handle
Easy positioning of the light using the central sterilize handle.

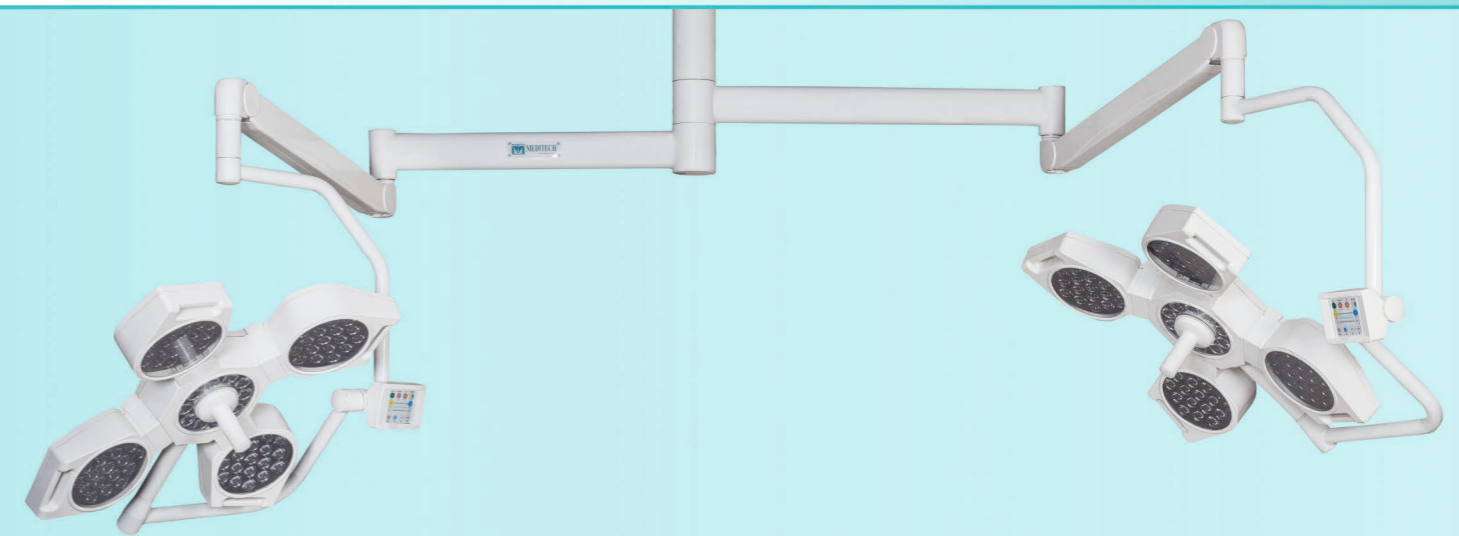


Medlight 50
(2,00,000 Lux)

Simple Manuverability
Enable users to move the dome in desired direction.



MedLight 50+50
(2,00,000 Lux + 2,00,000 Lux)



MedLight 40+40
(1,75,000 Lux + 1,75,000 Lux)

Technical Specifications

MedLight 50

MedLight 40

	MedLight 50	MedLight 40
Light Head Size	675 mm	625 mm
Light Intensity @ 1 m	200,000 Lux	175,000 Lux
Focus Size	15-30 cm	15-30 cm
Focus Control Adjustment	Automatic	Automatic
Depth of Illumination	140 cm	140 cm
Color Temperature	3700K,4300K,4800K	3700K,4300K,4800K
Variable Color Temperature	3500K-5000K	3500K-5000K
Color Rendering Index Ra (1)	96	96
Color Rendering Index R9 (red) (2)	≥ 90	≥ 90
Illumination Range	10%-100%	10%-100%
Endoscopy Setting	5%	5%
Number of LEDs	105	86
Life-Span of LEDs	60000 hrs	60000 hrs
Power Consumption	80 W	64 W
Control Unit	SMPS	SMPS

Camera with DVR (Samsung make)

The MedLight series is upgradable and can be customize in a variety of configurations.

Video System	High Definition 720p/1080i
Size	1/2.8"
Effective Number of Pixels	1952 (H) x 1116 (V)
Resolution	16:9 Full HD (1080p) Resolution Support
S/N Ratio	50dB
Optics	32x Optical Zoom 16x Digital Zoom Auto Focus
Focal Length (mm)	4.44~142.6mm (Optical 32x)
Min. Illumination	0.15 Lux@F1.6 (Color) 0.015 Lux@F1.6 (B/W)
Minimum Working Distance	1.5m
DVR Recording Capacity	1TB / 250 hrs
Power Consumption	4.2W
Power Source	12V DC/24V AC



MEDITECH (INDIA)[®]

Creating Your Lifeline

487/67, Glass Street, National Market, Peeragarhi, New Delhi-110087, India.

Tel. : +91-11-40392484

Mob. : +91- 9812266676, 9812035477

Email : info@meditech-india.com, marketinguk@meditech-india.com

Web : www.meditech-india.com

Skype : exportmeditech

Authorised Distributor